



PORT
OF ST. JOHN'S

PROFILE

**PORT OF
ST. JOHN'S:
WHERE HISTORY
MEETS NEW
OPPORTUNITIES**



PG.01	OUR MISSION & VISION
PG.03	A MESSAGE FROM THE CHAIRPERSON AND PRESIDENT & CEO
PG.05	EXCEPTIONAL SERVICE THAT CONNECTS TO THE WORLD
PG.05	THE PORT BY THE NUMBERS
PG.06	A MODERNIZED PORT FOR A BRIGHT FUTURE
PG.06	HARBOURING COLLABORATION & EVOLUTION
PG.07	CARGO SHIPPING
PG.09	OFFSHORE ENERGY SUPPLY & SERVICE
PG.10	SAFETY & SECURITY
PG.11	MARINE MAINTENANCE & REPAIR
PG.13	FISHING INDUSTRY
PG.14	CRUISE INDUSTRY
PG.15	SUSTAINABILITY
PG.16	GIVING BACK



GREET THE WORLD.

**GROW THE
OCEAN ECONOMY.**

**BUILD
FOR THE FUTURE.**

The SJPA's mission is to provide consistently valuable, innovative, and efficient port services that foster trade, regional growth, and provincial success.



The Port of St. John's is a strategic hub and diverse service centre supporting its primary industries, generating thousands of jobs, and welcoming visitors from around the world.

We are a modern port city with a rich history that has evolved to become a strategic global transportation hub and a powerful economic engine for Newfoundland and Labrador. And we're not stopping there—the port will continue to evolve and is poised to embrace the future of the growing ocean economy for centuries to come.

The St. John's Port Authority (SJPA) plays a central role in both the day-to-day marine operations of the port and in planning its future. We are solutions-focused and discover new ways to innovate, collaborate, and improve to ensure we are moving forward as a community.

A MESSAGE FROM THE CHAIRPERSON AND PRESIDENT & CEO

There's been no shortage of stories of resilience over the past several years—and the Port of St. John's is no exception to this rule. The port has experienced countless moments of innovation and persistence in the face of new opportunities and adversity alike. The collaboration and planning between the people and partners that make up our port community have been key ingredients to the SJPA's success, and they are our guiding light toward a bright future for the port.

Location may be what made us the first economic gateway between North America and Europe but people and the collective experience they offer are what truly drive the port's success. The decades of experience and rich knowledge are what provide members of the port community with the competence and advantage that foster trade, regional growth, and provincial success.

The diversity of services and partners that make up the port remains an immense benefit in times of challenge, and we know this will lead to future success as the SJPA continues

to meet the emerging needs of our users. As we continue to evolve, the SJPA draws on our diverse strengths to plan for future opportunities and enhancements. We must be adaptable and creative based on our limited space as we grow to fit current and future needs, while anticipating upcoming trends.

As future opportunities and challenges present themselves, the SJPA remains at the ready, committed to providing sustainable solutions to our partners and stakeholders. We remain grateful to them for offering the support and contributions which act as the foundation for our ability to greet the world, grow the economy, and deliver exceptional service.

Gerry Veitch
Chairperson



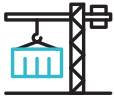
Sean Hanrahan, B.A., LL.B.
President & CEO



A WORLD OF OPPORTUNITY WHERE OUR CITY BEGINS.



EXCEPTIONAL SERVICES THAT CONNECT TO THE WORLD



The Port of St. John's is the site of the province's most advanced container terminal.



We are the primary offshore energy supply and service centre on the East Coast of Canada.



We are also the province's key marine transportation supply and service centre.



The Port of St. John's is one of the largest fish-handling ports in Newfoundland and Labrador.



The Port of St. John's is among the preferred destinations in Canada for the international cruise ship industry.

THE PORT BY THE NUMBERS

Total Port Cargo 2022

Dry Bulk	104,912
Liquid Bulk	515,737
General Cargo	787,794
Total	1,408,443

Total Vessel Arrivals 2022

Offshore	552
Other	554
Total	1,106

- i. Dry Bulk is loose, mostly uniform cargo, normally loaded/discharged by crane
- ii. Liquid Bulk is transported and stored in liquid form, other than in a drum or similar vessel
- iii. General cargo is a combination of Containers, Roll-on/Roll-off (Trailers and Automobiles) plus Break Bulk

A MODERNIZED PORT FOR A BRIGHT FUTURE

As we look to greet the world, grow the ocean economy, and build for the future, the port is always moving forward, innovating to meet the changing demands of the population and industry. Many sectors are touched by this gradual transformation, such as the pending redevelopment of Piers 20 West and 21 to further enhance the fishing industry with increased capabilities to move fresh product to market.

Technological advancements are also being implemented to move cargo more efficiently, which would improve land side and vessel side

operations by increasing gate throughput, data visibility, and make better use of the available land at the main terminal. Overall, this will streamline operations to meet increasing demand as well as reduce supply chain congestion, greenhouse gas emissions, and the port's overall carbon footprint.

This type of modernization and continued improvement requires a vision for what we want the next 50 years of the Port of St. John's to look like. We have that vision, and together we are putting the actions in motion to move toward a brighter future for all port industries.

HARBOURING COLLABORATION & EVOLUTION

The Port of St. John's is built on the collaborative efforts of many people and partners.

Our strategic location as the gateway to Newfoundland and Labrador means nonstop energy and technological advancement with a collective push toward building our ocean economy for the everyday, and for the future.

The port is where we greet the world, where cargo arrives in its various forms via ships from around the globe, and where our skilled workforce provides valuable and efficient services.



CARGO SHIPPING

The Port of St. John's is a fully integrated gateway for the transportation of an array of goods to and from the province of Newfoundland and Labrador. Home to the province's primary container shipping terminal, the port cultivates its reputation for exceptional and innovative service through strong partnership and awareness of the latest capabilities in container shipping.

The port's primary shipping partner, Oceanex Inc., is key to the current and future success of container shipping activities. As consumers across Canada grow increasingly aware of the complexity of international supply chains,

working with a reliable and forward-thinking partner like Oceanex is essential to the Port of St. John's operations—no matter the time of year.

Oceanex offers pier-to-pier and door-to-door transportation services that are renowned for their timely and seamless delivery experience. With two ice-class RoRo vessels and one ice-class container vessel, Oceanex keeps the Port of St. John's connected via two weekly connections to the Port of Montreal, Quebec, and a weekly connection to the Port of Halifax, Nova Scotia. In addition, its three mobile harbour cranes ensure the efficient loading and unloading of goods in port.



OCEANEX HANDLES 50% OF THE CARGO THAT COMES ONTO THE ISLAND AND, AS THE ONLY SHIPPING LINE WITH SERVICE TO THE PORT OF ST. JOHN'S, IT IS RESPONSIBLE FOR DELIVERING A LARGE PORTION OF THE GOODS WE USE EACH AND EVERY DAY.



A view from the bridge of a ship, looking out over a port area. In the foreground, the ship's control panel is visible, featuring a telephone, a microphone, and various electronic displays. One display shows '28.0' in red. Another display shows '00:00:00' in red. A nameplate on the panel reads 'OCEANEX CONNORRA' and 'MON BRIDGE'. The background shows a busy port with several cranes, including a large blue one, and various buildings, including a prominent orange and blue high-rise. The sky is overcast.

PROVIDING VALUABLE,
EFFICIENT SERVICES TO FOSTER
TRADE AND REGIONAL SUCCESS.

OFFSHORE ENERGY SUPPLY & SERVICE

The Port of St. John's is strategically located and plays a vital role in supporting the offshore energy supply chain from exploration to operations and maintenance.

The A. Harvey Marine Base is the largest offshore marine base in Canada, handling the highest volume of offshore support vessels, while providing employment for many people. With unrivaled experience, the port has provided integral services to this important sector for more than 50 years. The resulting benefits to our province are numerous, and our partners continue to lead the way—always innovating to ensure continued support and high standards while working together in this essential and valuable sector.



THE PORT IS SUPPORTING ITS CUSTOMERS IN THEIR EFFORT TO DECARBONISE OPERATIONS FOR VESSELS BERTHED ALONGSIDE.

ON AVERAGE, MORE THAN 500 OFFSHORE ENERGY SUPPLY AND SERVICE VESSELS ANNUALLY ARRIVE TO THE PORT.



SAFETY & SECURITY

Safety and security always has and always will be a priority for the SJPA. Coordinating the comings and goings of vessels, docking, and loading and unloading cargo is a process that involves many people and a high level of communication.

We take this very seriously and abide by rules and regulations set around protecting the people who work here and call St. John's home, whether as residents or as short-term stays in port. Maintaining above-standard levels of safety keeps things flowing smoothly and efficiently; and protects people and the environment.

As the port is the place where land meets the sea, it's imperative that we adhere to safety standards and continue to evolve when it comes to the marine environment. All precautions are taken to ensure minimal impact to the natural surroundings that offer us a place to live and work.

The port continues to be a place for industry to thrive, and community to gather. Port users are protected whether they are joining us as a place of work, or as a place to spend quality time such as visiting Harbourside Park, the Terry Fox Monument, or the three popular waterside restaurants.

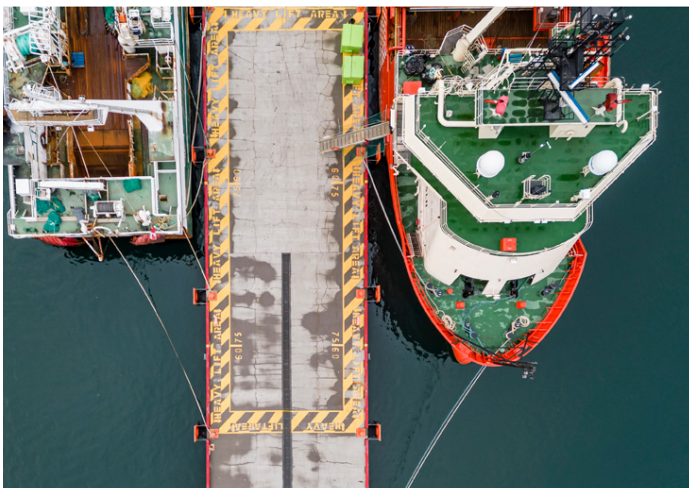


MARINE MAINTENANCE & REPAIR

With over 130 years of experience and history, Newdock, in partnership with other service providers in the Port of St. John's, offers an extensive breadth and depth of capabilities and services to repair ships.

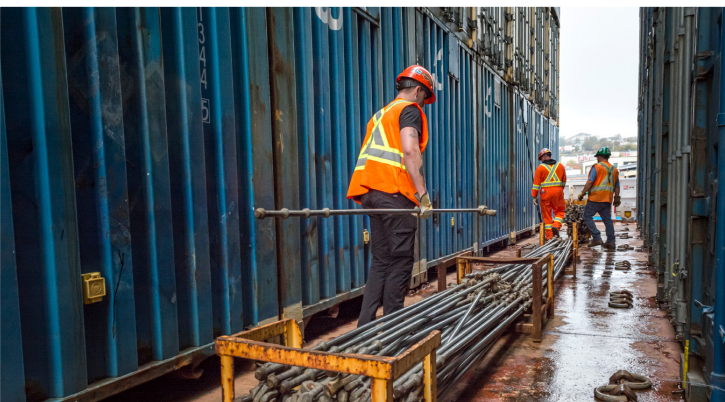
From regular maintenance to the most complex of problems, the skilled and experienced workforce is committed to fast turnaround and specialized fabrication for subsea and other offshore-related industries. The 6,500 square metre manufacturing area makes it one of the few dockyards in the world that can construct and test offshore subsea equipment, amongst other repair, refit, and conversion projects.

Newdock's competitive advantage comes from the wide range of vessels it can work on, up to six at a time, including Canadian Coast Guard and Navy Fleets, offshore supply, barge, ferry, and fishing vessels. This allows for its team to be constantly learning and evolving their skills with new certifications and work experiences; keeping service top-notch and therefore vessels back out on the water even faster.





STRATEGICALLY LOCATED, THE PORT OF ST. JOHN'S PLAYS A VITAL ROLE IN SUPPORTING THE MARINE SECTOR FROM EXPLORATION TO OPERATIONS AND MAINTENANCE.



FISHING INDUSTRY

For more than 500 years, the port has been an integral part and a vital service centre in the fishing industry, both in processing and distribution. Millions of pounds of fish, supplied from prime fishing grounds just offshore, are handled each year mainly between April and October, with a highly skilled workforce and dockside capabilities enabling quick processing turnarounds.

With over 800 small vessels arriving last year alone, 2021 was a record-setting year for both fish landings and seafood exports. The redevelopment of Piers 20 West and 21 in the coming years will only add further capabilities to this critical industry: fostering trade, regional growth, and provincial success. The outlook for Newfoundland and Labrador's fishing and aquaculture industries is expected to remain positive, providing jobs, critical service offerings, and a valuable export market for the province.



PIERS 20W AND 21 REDEVELOPMENT WILL IMPROVE LANDSIDE OPERATIONS FOR THE INSHORE FISHING INDUSTRY.



CRUISE INDUSTRY

Although few industries have been left untouched by the changes brought about by the pandemic, few have experienced the kind of disruption observed in the cruise sector. Recommencing officially on June 12, 2022, the arrival of the Ocean Endeavour, an Adventure Canada expedition ship, signaled a fresh start for the Port of St. John's.

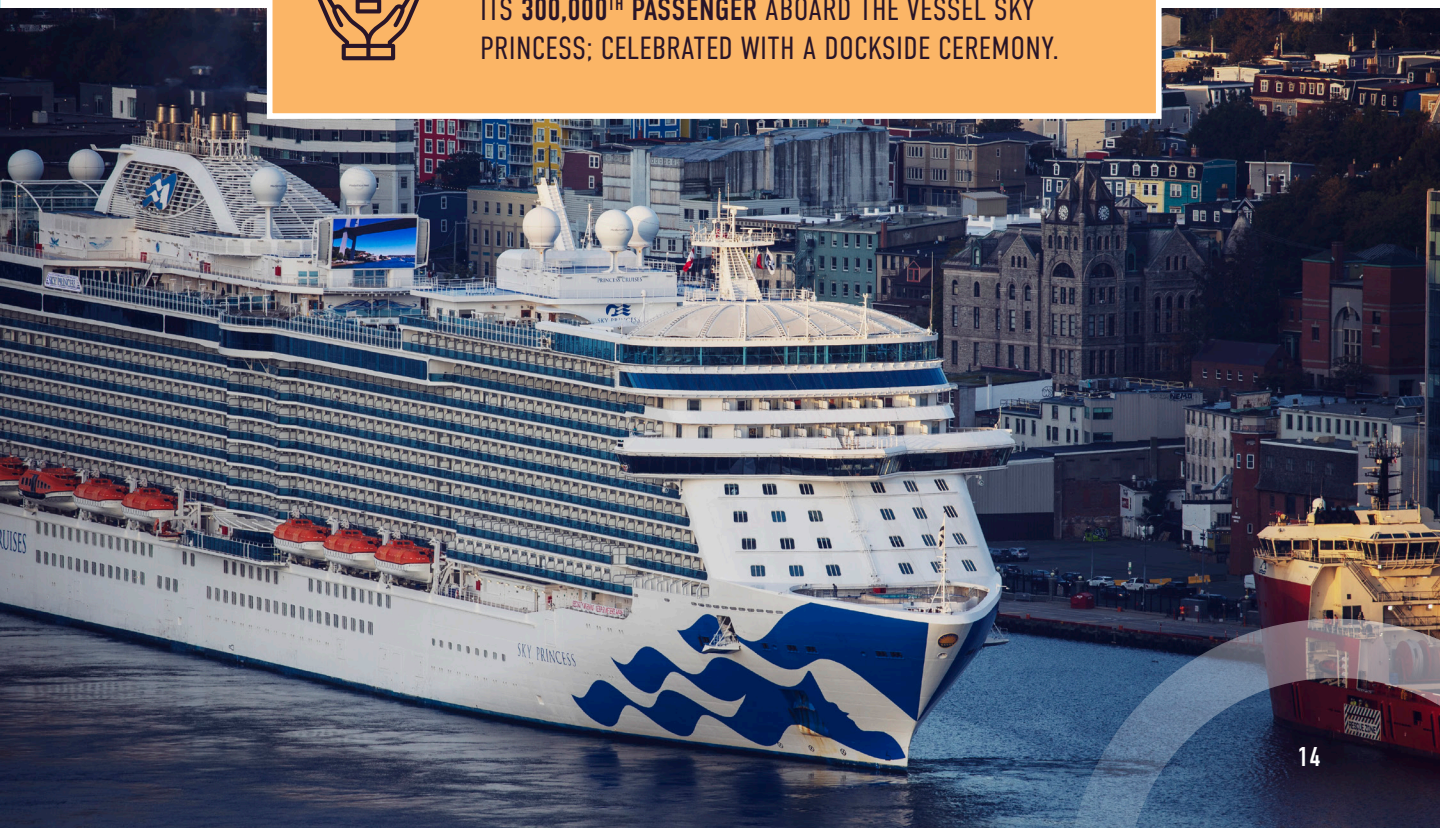
The SJPA has been hard at work with partners and regulatory authorities to welcome back passengers and crew to our world-class destination, serving as a port of call for the trans-Atlantic (North), Adventure Expedition, Canada-New England, and home-porting itineraries.

The SJPA has partnered with numerous organizations to increase the profile of St. John's as an internationally-preferred cruise destination such as the City of St. John's in Cruise St. John's—a team dedicated to attracting new cruise lines, welcoming passengers to our beautiful city, and delivering world-class experiences. Another valued partner is Cruise Newfoundland and Labrador, the provincial cruise association focused on promoting the province as a leading global cruise destination.

In the 2022 season, we welcomed 30 cruise ships to St. John's, and we look forward to an even brighter and busier cruise season in 2023 and beyond.



ON OCTOBER 22, 2022, THE PORT OF ST. JOHN'S WELCOMED ITS 300,000TH PASSENGER ABOARD THE VESSEL SKY PRINCESS; CELEBRATED WITH A DOCKSIDE CEREMONY.



SUSTAINABILITY

The SJPA is committed to environmental action in our spaces and in our ocean. We make it a priority to preserve the environmental integrity of the harbour and the land which surrounds it, striving to ensure port activities are as modern and sustainable as they can be.

This incorporates following industry best practices, including those annually reviewed by the Association of Canadian Port Authorities and that comply with the marine environment protection policies, program, and codes outlined by Transport Canada.

The SJPA is also a proud certified member of the Green Marine Program, the leading environmental certification program for North America's maritime industry.

Further, the SJPA puts this commitment to bettering our environmental actions to the service of our customers, partners, and broader community members. The SJPA is committed to supporting the decarbonization of marine activities and routes by connecting St. John's to a broader network of green corridors. In port, the SJPA has developed its capacity to provide shore-based power systems to a significant extent.



THE SJPA IS COMMITTED TO WORKING WITH INDUSTRY PARTNERS IN THE ESTABLISHMENT OF GREEN SHIPPING CORRIDORS.



EVERY YEAR SINCE 2018, THE SJPA HAS BEEN GIVING APPROXIMATELY \$40,000 BACK TO THE LOCAL COMMUNITY VIA THE UNITED WAY NL. THIS CHARITABLE GIVING HELPS FUND IMPORTANT PROGRAMS LIKE “ALL THAT KIDS CAN BE,” “HEALTHY PEOPLE, STRONG COMMUNITIES,” AND “MOVING FROM POVERTY TO POSSIBILITY.”

GIVING BACK

The Port of St. John’s is proud to play an active role in the community in which we live and work. We believe in giving back and we are thrilled to participate in a number of programs that make a positive impact in our community each year.

This investment in our community starts with supporting the leaders of tomorrow. Each year, the SJPA awards scholarships across the province to deserving students who are beginning post-secondary studies. To date, we have given over \$127,500 in educational funds to support deserving students. We are also proud to support initiatives that prepare and provide hot, nutritious meals to school children in the area through the School Lunch Association.

Through its Community Investment Programme, the SJPA has been donating 0.5% of its Operating Revenues (estimated at \$40,000 per year) to United Way NL.

The United Way NL distributes this charitable giving to support a broad range of local programs and services which address both immediate needs and root causes of various social issues in our communities.

The SJPA also participates in a number of exciting and interactive events throughout the year, including the Turning the Tide Marine Industry awards as presenting sponsor. From this first-of-its-kind celebration of our industry to yacht races, special commemorations, and film/tv shooting support, we are proud to be involved in activities that give back to our community.



PORT
OF ST. JOHN'S